



Prefabricated **TIMBER FRAME MODULES & PANELS**

for fast on-site
construction

About company

Timber frame module & panel manufacturer

International multi-country work experience

Over 100 single family & multi-storey projects since 2010



Flexible designs according to customer requirements & appropriate country regulations

Modules & panels certified by European Organisation for Technical Assessment (EOTA)

In-house engineering team

ISO 9001:2015 certificate

Do you know how much your time costs?!

TIME IS MONEY



Modular construction schedule



Site built construction schedule



Multiple **benefits**

Speed of construction

Faster return on investments

Strict quality control

Completed & fully designed solution

Controlled environment

Cost certainty after design freeze stage

Reduces on site wet trades & construction waste, minimal snagging

The «greenest» form of construction



Manufacturing process



Design technology

Full construction
& factory
drawings design

Lateral resistance
calculations & design

Energy efficiency
calculations

Full structure
static calculations

Excellent acoustic
parameters

Air permeability
design

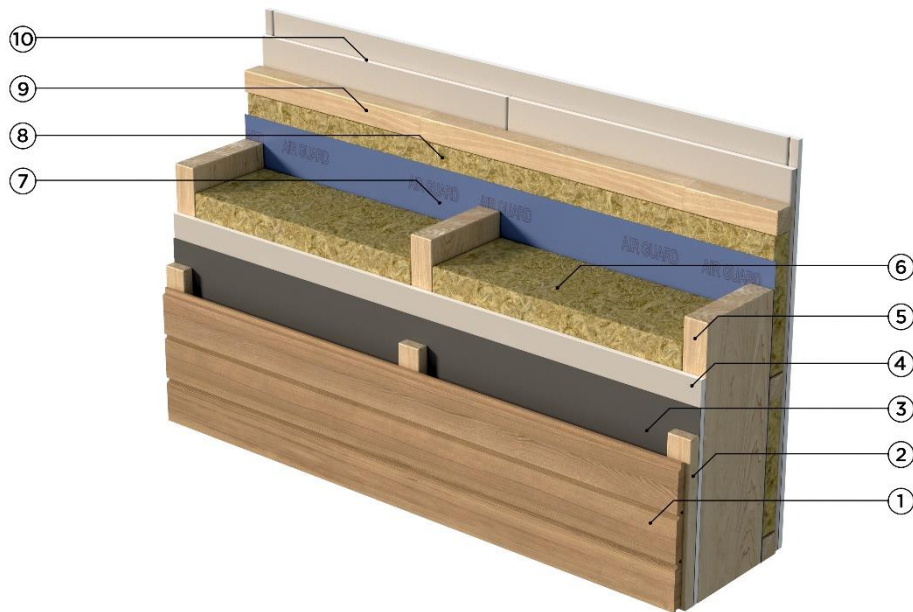
Full M&E
design

Building Information
Modeling (BIM) system



Example of external wall build-up

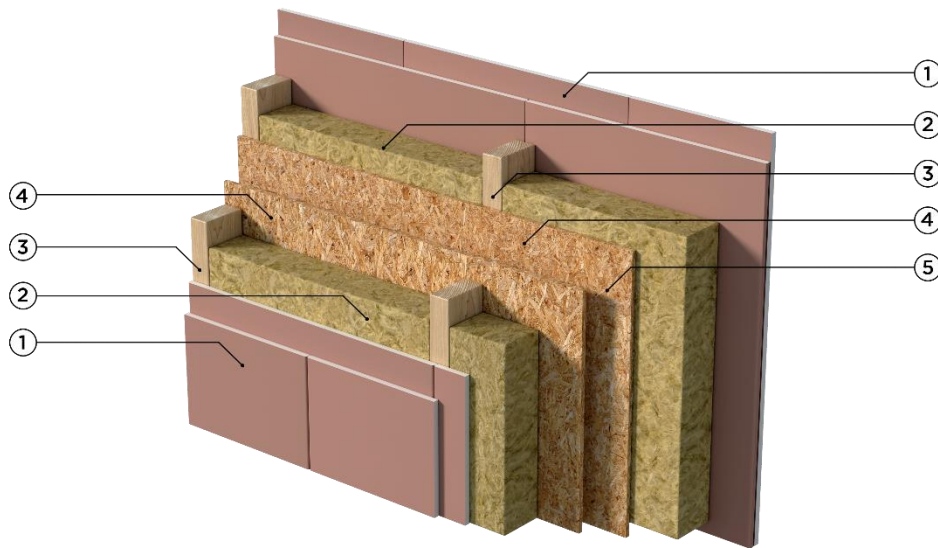
EW-1-1 (REI 30)



1. Horizontal wood cladding 20 mm
2. Vertical battens 25 mm x 45 mm
3. Wind barrier
4. Wind gypsum 9,5 mm
5. Timber studs 195 mm x 45 mm
6. Insulation 195 mm
7. Vapour control layer
8. Insulation 45 mm
9. Horizontal battens 45 mm x 45 mm
10. Plasterboard GKB 12,5 mm (GKBi in bathrooms)

Example of party-wall build-up

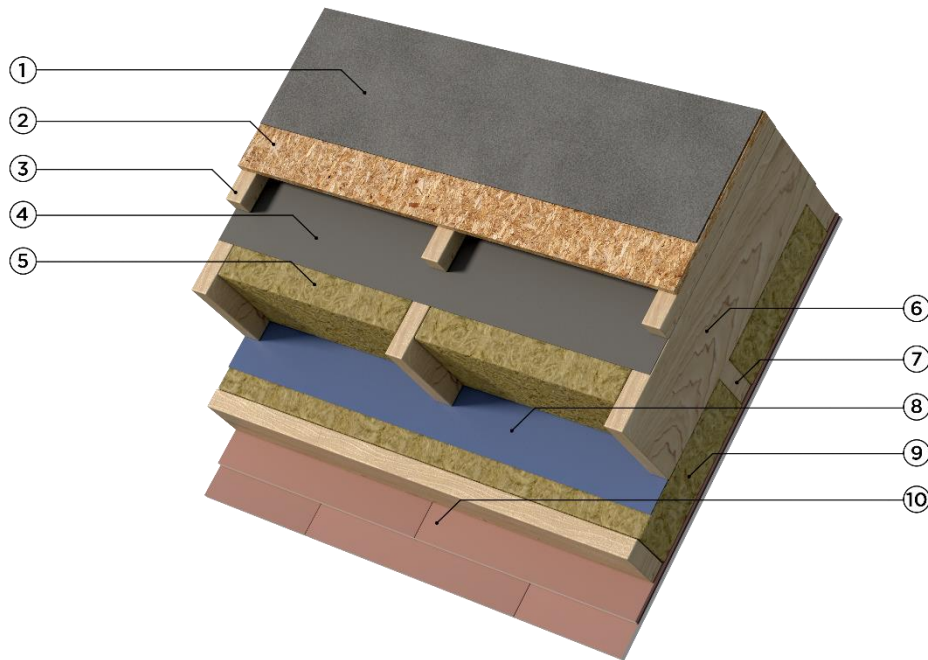
PW-1-3 (REI 60)



1. Fire resistant plasterboard GKF 12,5 mm (GKBi in bathrooms)
2. Insulation 95 mm
3. Timber stud 95 mm x 45 mm
4. OSB/3 10 mm
5. Air gap 30 mm

Example of pitched roof build-up

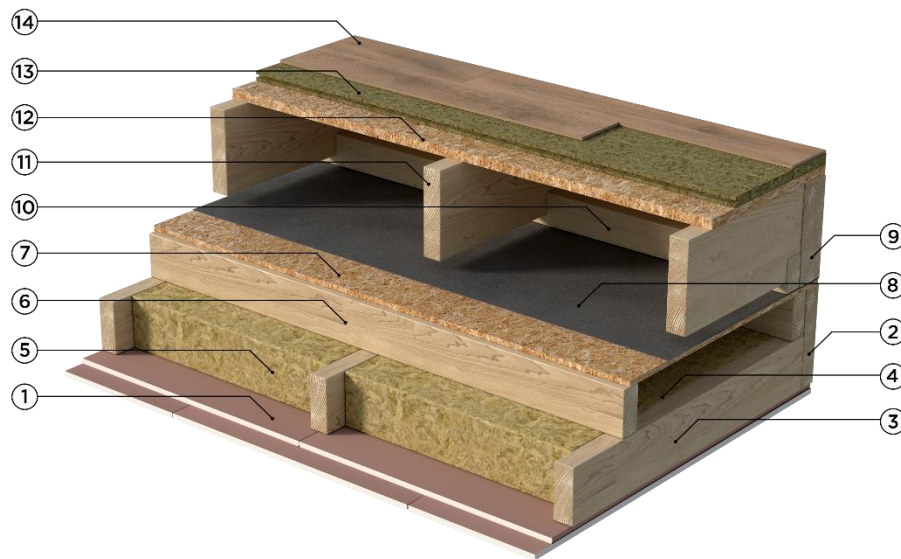
RS-1-1 (REI 60)



1. Roofing (Ruberoid)
2. OSB/3 18 mm
3. Timber battens 45 mm x 45 mm
4. Wind barrier
5. Insulation 220 mm
6. Timber cross battens 220 mm
7. Timber beams 120 mm
8. Vapour control layer
9. Insulation 120 mm
10. Fire resistant plasterboard GKF 12,5 mm

Example of intermediate floor section (modular technology only)

FR-1-1 (REI 60)



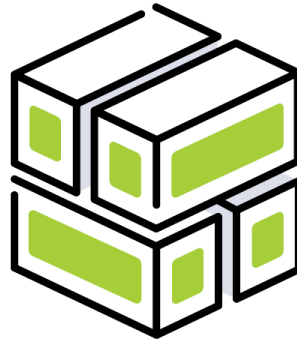
1. Fire resistant plasterboard GKF 12,5mm
2. Perimeter beam 220 mm x 45 mm
3. Timber beams 120 mm x 45 mm
4. Void for services 100 mm
5. Sound insulation 120 mm
6. Timber battens 100 mm x 45 mm
7. OSB/3 12 mm
8. Transport roofing (bitumen membrane)
9. Perimeter beam 220 mm x 75 mm
10. Ledger 70 mm x 45 mm
11. Timber beams 195 mm x 45 mm
12. OSB/3 22 mm
13. Acoustic board 28 mm
14. Engineered floor 20 mm

Nordic Homes

modular projects in the U.K.

7 multi-storey
projects in
5 years

547 student
apartments & 59
luxury apartments



Total GLA
~18 000 m²

Over 700 modules
produced &
delivered

Project in Southampton



- ▶ Completion 2015
- ▶ 50 student apartments
- ▶ GLA 1 330 m²
- ▶ 2, 3 & 4 storey building



Project in Liverpool



- ▶ Completion 2015
- ▶ 339 student apartments
- ▶ GLA 7 515 m²
- ▶ Three towers – 5, 7, 9 stories



Project in Herne Hill



- ▶ Completion 2013
- ▶ 69 student apartments
- ▶ GLA 1 515 m²
- ▶ 4 storey building



Project in Plymouth



- ▶ Completion 2013
- ▶ 89 student apartments
- ▶ GLA 2 600 m²
- ▶ 6 storey building



Project in Slough



- ▶ Completion 2016
- ▶ 9 apartments
- ▶ GLA 750 m²
- ▶ 3 storey building



Project in Battersea



- ▶ Completion 2014
- ▶ 38 luxury apartments
- ▶ GLA 2 900 m²
- ▶ 5 storey building



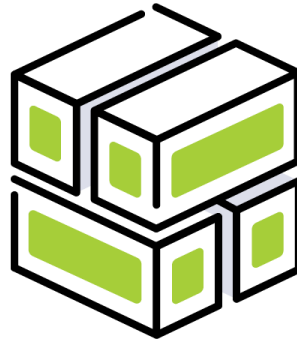
Project in Ascot



- ▶ Completion 2014
- ▶ 12 luxury apartments
- ▶ GLA 1 530 m²
- ▶ 3 storey building

Nordic Homes modular projects in Scandinavian countries

47 two-
storey
residential
row houses



3 multi-storey
projects

Total GLA
~8 500m²

313 modules

Project in Rydeback, Sweden



- ▶ Completion 2017
- ▶ 23 row residential houses
- ▶ GLA 2 400 m²
- ▶ 2 storey building



Project in Hoganas, Sweden



- ▶ Completion 2017
- ▶ 24 row residential houses
- ▶ GLA 2 600 m²
- ▶ 2 storey building



Project in Hoyvik, Faroe Islands



- ▶ Completion 2019
- ▶ 21 apartments
- ▶ GLA 1 360 m²
- ▶ 4-storey building



Project in Hoyvik, Faroe Islands



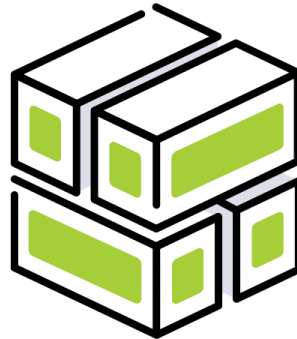
- ▶ Completion 2020
- ▶ 15 apartments
- ▶ GLA 960 m²
- ▶ 4-storey building



Nordic Homes modular projects in Latvia

Producing for 5
different villages
& various other
sites in Latvia

Over 90
detached
single family
houses built



Total GLA
~11 000 m²

The first 4-section
townhouse in Salaspils,
6-section townhouse in
Carnikava

SPA hotel project in
Aizpute

Projects in Adazi, Babite, Carnikava, Marupe & Salaspils



- ▶ Completion 2011 to present
- ▶ Average house GLA 150 m²
- ▶ High energy efficiency



Project in Carnikava

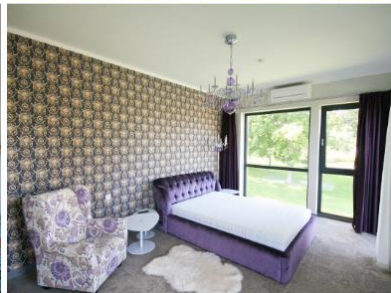


- ▶ Completion 2018
- ▶ 6-section row-house
- ▶ GLA 660 m²
- ▶ 2-storey building

Project in Aizpute

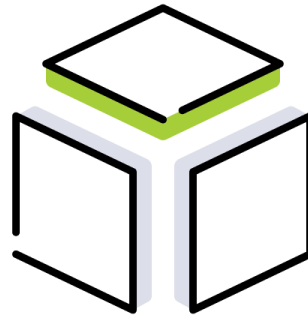


- ▶ Completion 2016 and 2018
- ▶ Total 7 detached luxury bungalows for SPA complex
- ▶ GLA 1940 m²



Nordic Homes timber frame panel projects in the U.K.

8 multi-
storey
projects in
3 years



Total GLA
~2 500 m²

Nordic Homes timber frame panel projects in the U.K.



Video

23 townhouses in Sweden



Thank you!
Any questions?

ARE YOU READY TO GET GOING?

Nordic Homes Ltd
Celtnieku Street 36
Ane, LV-3043, Latvia

www.nordichomes.lv | +371 6666 3041 | info@nordichomes.lv